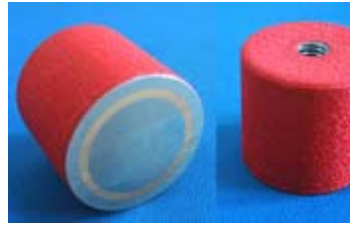


Magnetic Assemblies >> Pot Magnet

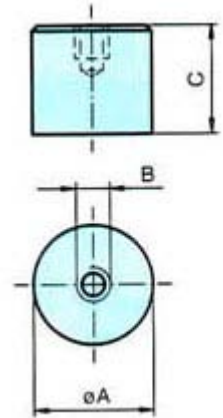
Alnico holding assemblies

Alnico Deep Pot Magnet:

A deep cylindrical permanent magnet assembled concentrically in a mild steel pot with spacer of Aluminum or Copper. These magnets are primarily for gripping applications. Magnet material used is Alnico 5, working temperature is up to 250 degrees C. North polarity in center of holding face and each magnet has a coated keeper. Outer surface except pole can be red (smooth or wrinkle) painted, or coated with Zinc, Nickel or Chrome.

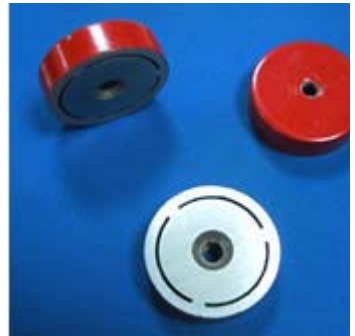


Part No.	Dimensions in mm				
	A	B	C	Holding Force (kg)	Weight (kg)
DPM-01-01	9.5	M3	15.1	1.00	0.005
DPM-01-02	12.7	M4	15.9	2.00	0.015
DPM-01-03	17.6	M6	16.0	2.65	0.025
DPM-01-04	20.5	M6	19.0	4.00	0.050
DPM-01-05	27.0	M6	25.0	6.10	0.110
DPM-01-06	35.0	M6	30.0	15.00	0.220
DPM-01-07	65.0	M12	43.0	40.00	1.080

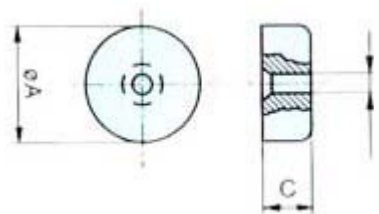


Alnico Shallow Pot Magnet:

Designed for application where height is too restricted for conventional deep pot magnets. A magnet with counter hole assembled in a mild steel pot by spacer or tree points press fixing. Magnet material used is Alnico 5, working temperature is up to 250 degrees C. North polarity in center of holding face and each magnet has a coated keeper. Outer surface except pole can be red (smooth or wrinkle) painted, or coated with Zinc, Nickel or Chrome.



Part No.	Dimensions in mm				
	A	B	C	Holding force (kg)	Weight (kg)
SPM-01-01	19.1	3.7	7.75	3.0	0.013
SPM-01-02	28.6	4.8	8.70	5.0	0.036
SPM-01-03	38.1	4.8	10.6	13.0	0.080

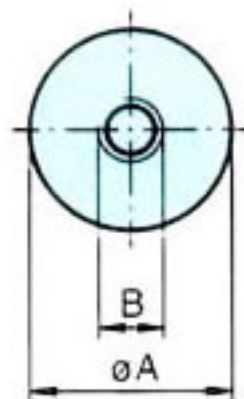
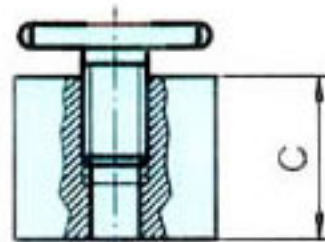


Alnico Magnetic Holdfast:

A range of Pot Magnets for workholding and workhandling where positive grip is required, but not attraction from a distance. Each Holdfast is equipped with a screw down handle because of the exceptionally strong grip of this range of magnets. Magnetic Holdfasts can be used singly or together to make welding and other assembly jigs. Magnet material used is Alnico 5, working temperature is up to 250 degrees C. North polarity in center of holding face and each magnet has a coated keeper. Outer surface except pole can be red (smooth or wrinkle) painted, or coated with Zinc, Nickel or Chrome.



Part No.	Dimensions in mm						
	A	B	C	Fixing hole centers	No. of holes	Holding force (kg)	Weight (kg)
MHF-01-01	44.5	M8	44.5	31.8	2	20	0.55
MHF-01-02	54	M8	50.8	38.1	2	40	0.95
MHF-01-03	70.0	M8	63.5	50.8	2	88	1.95
MHF-01-04	103	M8	74.6	69.1 PCD	3	183	4.70
MHF-02-05	95.3	M8	CUBE	80.3 PCD	8(4 on 2 faces)	214	7.50



Alnico Magnetic Foot:

A rectangular block comprising two pot type magnets set into one mild steel housing. The Magnetic Foot is ideal for gripping applications. The mild steel case is suitable for drilling and tapping in most locations. Magnet material used is Alnico 5, working temperature is up to 250 degrees C. North polarity in center of holding face and each magnet has a coated keeper. Outer surface except pole can be red (smooth or wrinkle) painted.

Part No.	Dimensions in mm				Holding force (kg)	Weight (kg)
	A	B	C	D		
MFT-01-01	60	25	25	M6	12	0.32