

Magnetic Assemblies >> Pot Magnet

☑ Ferrite holding assemblies

Ferrite Shallow Pot Magnets:

The range of Ferrite Shallow Pot Magnets are wide and shallow and thus are ideal for limpet type gripping applications. Each magnet in the range is manufactured using standard M6 thread for building into jigs and fixtures and is fitted with a J bolt. Surface can be red painted, or coated with nickel, zinc, or Chrome.



Part No.	Dimensions in mm				
	A	B	C	Holding Force (kg)	Weight (kg)
FSP-01-01	46	10.7	M 6	6	0.09
FSP-01-01	56	10.7	M 6	16	0.13
FSP-01-01	66	10.7	M 6	25	0.19

Ferrite Shallow Holdfast Magnets:

All Ferrite Shallow Holdfast Magnets are fitted with a screw down bolt to facilitate the disengagement of workpieces. Each magnet is manufactured with three pre-threaded holes and standard M6 thread. Surface can be red painted, or coated with nickel, zinc, or Chrome.



Part No.	Dimensions in mm						
	A	B	C	Fixing stud centers (mm)	No. of holes	Holding force (kg)	Weight (kg)
FHF-01-01	66	10.7	M6	46	3	25	0.27
FHF-01-02	76	4.8	M6	63	3	33	0.30
FHF-01-03	100	4.8	M6	63	3	55	0.61

Ferrite Flat Pot Magnet without Threaded Bush



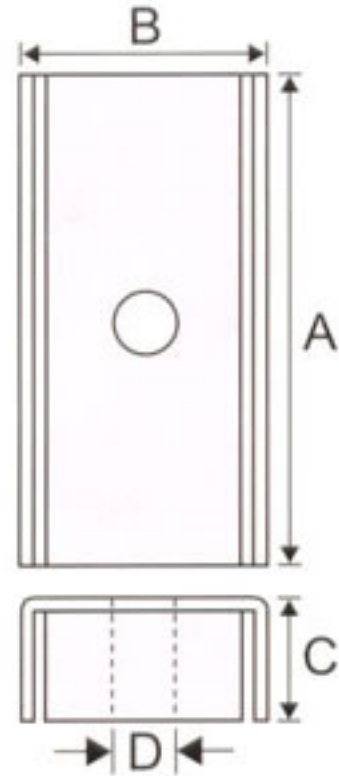
Part No.	Dimensions in mm						
	A	B	C	Fixing hole centers	No. of holes	Holding force (kg)	Weight (kg)
MHF-01-01	44.5	M8	44.5	31.8	2	20	0.55
MHF-01-02	54	M8	50.8	38.1	2	40	0.95
MHF-01-03	70.0	M8	63.5	50.8	2	88	1.95
MHF-01-04	103	M8	74.6	69.1 PCD	3	183	4.70
MHF-02-05	95.3	M8	CUBE	80.3 PCD	8(4 on 2 faces)	214	7.50

Ferrite Magnetic Multi-angle Welding Clamp:



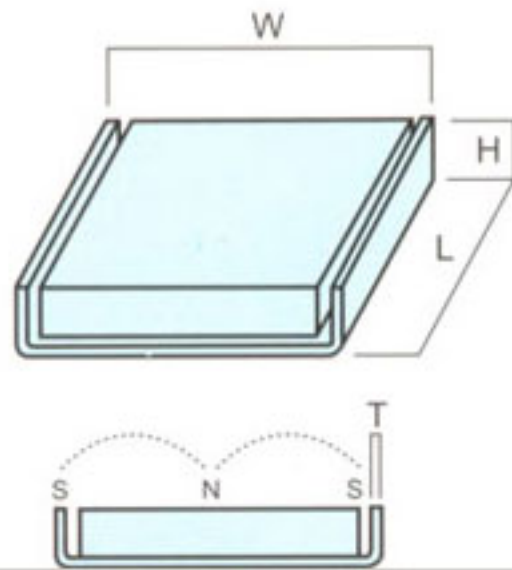
Part No.	Dimensions in mm					
	A	B	C	D	Holding force (kg)	Weight (kg)
FWC-01-01	120	82	16		20	
FWC-01-02	155	102	20		28	
FWC-01-03	190	121	27		68	

Square Type Holding Magnet with hole



Part No.	Dimension (mm)				Holding Force Kgs
	A	B	C	D	
XFP-01-01	19.50	13.00	4.50	3.50	1.3
XFP-01-02	20.00	10.00	4.50	N/A	0.6
XFP-01-03	24.00	16.50	7.00	N/A	2.5
XFP-01-04	28.50	15.50	4.50	3.50	2.5
XFC-01-05	42.50	25.50	10.00	N/A	15.0

Square Type Holding Magnet without hole



Part No.	L × W × H	Thickness	Holding Force Kgs
XWJ-01-01	20×8×4	0.6	1
XWJ-01-02	24×14×5.5	1.0	2
XWJ-01-03	25.5×23.5×6.5	1.4	6
XWJ-01-04	26×11×6	1.0	4
XWJ-01-05	45×30×7	1.6	15
XWJ-01-06	49×41×13	2.0	20
XWJ-01-07	60×24×7	1.4	15
XWJ-01-08	79×38×11	2.0	25
XWJ-01-09	80×25.5×7	1.6	18
XWJ-01-10	90×18×6	1.2	10