

# Magnetic Assemblies >> Pull-and-Push Magnetic Attractor

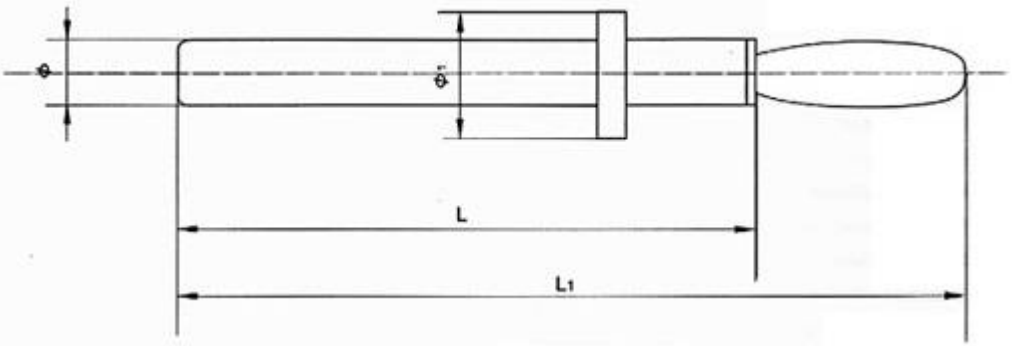
## Pull-and-Push Magnetic Attractor



■ Component Part: Stainless steel body non-responsive to magnets plus high quality and high performance materials.

■ Features: This attractor has strong permanent magnet power, can attract irons/steel pieces or iron/steel substances onto its lower end or around itself. This attractor can allure iron/steel piece iron substances in liquids, in powder or among grains and/or granules, such as attracting iron substances from electroplating bath, separating iron dusts, iron chips, and iron filings from lathes attracting small iron needles and pieces fallen on the ground or separating iron/steel things from materials.

■ Application: Put the attractor into the area or container or bath where there are iron/steel piece substances, and they will gather to the lower end or round itself. Then put the attractor into the recovery tray, and pull the handle up, and some of the iron and/or steel substances will fall into the tray, the rest might be barred by the blocking piece, and they will fall into the recovery tray. Posi the blocking piece may be adjusted as need be, reset the attractor after all iron pieces and/or iron substances have fallen into the recovery tray. Reset this attractor and you can apply it again and again and the magnetic power will never weaken.



Model	Specifications	Φ	L	Φ L	L1	Max operation temperature (°C)
YXPB01	22 × 250	22	250	52	330	< 80
YXPB02	22 × 270	22	270	52	340	< 80
YXPB03	22 × 350	22	350	52	430	< 80
YXPB04	22 × 450	22	450	52	530	< 80
YXPB05	25 × 350	25	350	55	430	< 80
YXPB06	25 × 400	25	400	55	480	< 80
YXPB07	25 × 500	25	500	55	580	< 80
YXPB08	32 × 250	32	250	62	330	< 80
YXPB09	32 × 350	32	350	62	430	< 80
YXPB10	32 × 400	32	400	62	480	< 80
YXPB11	32 × 500	32	500	62	580	< 80



■ Magnetic Bar Filter is made of permanent magnetic bars with special magnetic circuit. It is widely used in many fields like chemical industry, ceramics, smelting and food etc. to remove small iron or magnetic substance for an ideal pure effect.

Model	Specifications ( $\Phi$ XL)	Surface magnetic force	
		KG	mT
YXGB1580	$\Phi$ 15 $\times$ 80	2.4	240
YXGB1517	$\Phi$ 15 $\times$ 170	2.4	240
YXGB1530	$\Phi$ 15 $\times$ 300	2.4	240
YXGB2010	$\Phi$ 20 $\times$ 100	2.5	250
YXGB3015	$\Phi$ 30 $\times$ 150	2.5	250