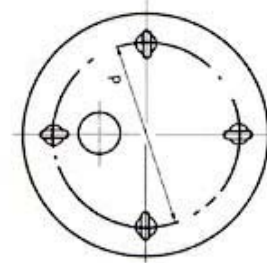


- ❖ Home
- ❖ **Magnetic Assemblies**
 - Pot Magnet
 - Bar Magnet
 - Square Magnet
 - Horseshoe Magnet
 - Magnetic stand
 - Magnetic Chuck
 - Magnetic Sweepers
 - Pull-and-Push Magnetic Attractor
 - Magnetic door suction
 - Magnetic Separator
 - Lifting Magnets
- ❖ **Specification of Magnets**
- ❖ **Process Pieces**
- ❖ **Other Products**

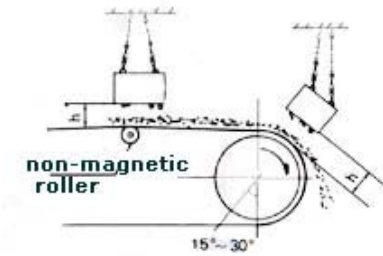
Magnetic Assemblies >> Magnetic Separator

Series PDC Dry Electromagnetic Separator

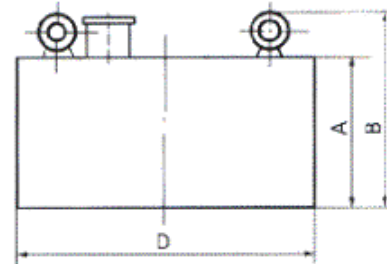
Specification: Series PDC Electromagnetic Tramp Iron Separator



Overall dimension drawing



Installation Sketch Map



Product Introduction:

Series PDC dry electric-magnetic separator is a iron-separation device used to eliminate iron mixed in the powder or block nonmagnetic material. The internal is made use of the special resin for electric engineer with whole sealed structure. Featuring with deep revealed magnetic depth, high magnetic force, rain and dust protection and erosion-wearing etc.,it can be work in the harsh environment.

Technical Parameters

| item parameter | Diameter Dmm | Belt width adaptive mm | materials depth ≤mm | excitation power ≤kw | Rotational speed ≤r/min | Torsion N.m | weight kg | Outline dimension mm | | | | | |
|----------------|--------------|------------------------|---------------------|----------------------|-------------------------|-------------|-----------|----------------------|------|-----|-----|-----|-----|
| | | | | | | | | A | B | C | E | F | d |
| PFLT-50/50 | 500 | 500 | 80 | 1 | 60 | 1750 | 610 | 600 | 850 | 185 | 225 | 205 | 55 |
| PFLT-50/65 | | 650 | 100 | 1.5 | | 2100 | 920 | 705 | 1000 | 185 | 240 | 221 | 60 |
| PFLT-50/80 | | 800 | 120 | 2 | | 2750 | 170 | 950 | 1300 | 185 | 260 | 237 | 70 |
| PFLT-80/100 | 800 | 1000 | 150 | 2.5 | | 4500 | 1500 | 1140 | 1500 | 225 | 295 | 251 | 90 |
| PFLT-80/120 | 800 | 1200 | 180 | 3.5 | 47 | 8000 | 2050 | 1400 | 1750 | 225 | 330 | 267 | 100 |
| PFLT-100/140 | 1000 | 1400 | 230 | 5.5 | 47 | 8000 | 4050 | 1700 | 2000 | 225 | 400 | 295 | 110 |
| PFLT-120/160 | 1000 | 1600 | 300 | 8 | 47 | 9500 | 6080 | 1900 | 2250 | 225 | 400 | 295 | 110 |

(For Reference Only)

[Back to Magnetic-Separator](#)