

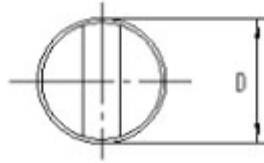
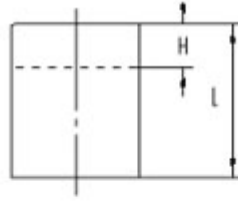
# Magnetic Assemblies >> Pot Magnet

## YXN101-401 Series

### YXN101-108

Construction:cylindrical  
Casing:brass  
Operating temp:max.90°C  
Versions up to 200°C  
On request

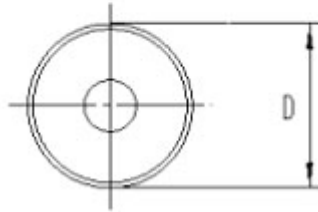
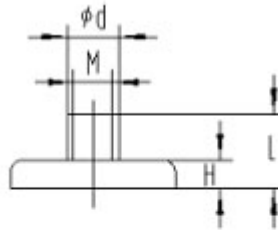
Part No.	D	L	H	Weight gram	Attractive force N
YXN 101	6	20	10	4.5	10
YXN 102	8	20	10	8	25
YXN 103	10	20	8	12.5	45
YXN 104	13	20	8	20	70
YXN 105	16	20	2	32	150
YXN 106	20	25	6	60	280
YXN 107	25	35	7	135	450
YXN 108	32	40	5	250	700



### YXN201-208

Construction:flat with treaded bush  
Casing:galvanized  
Operating temp:max.90°C  
Versions up to 200°C

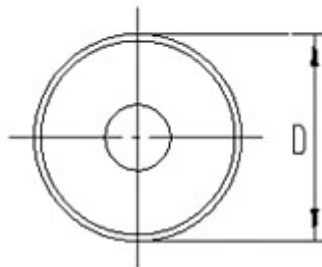
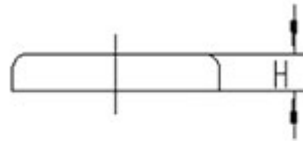
Part No.	D	L	H	d	M	Weight gram	Attractive force N
YXN 201	6	11.5	4.5	6	3	1.5	5
YXN 202	8	11.5	4.5	6	3	2	13
YXN 203	10	11.5	4.5	6	3	3	25
YXN 204	13	11.5	4.5	6	3	5	60
YXN 205	16	11.5	4.5	8	4	7.5	95
YXN 206	20	13.0	6.0	8	4	16	140
YXN 207	25	14.0	7.0	8	4	25	200
YXN 208	32	15.5	7.0	10	5	48	350



### YXN301-308

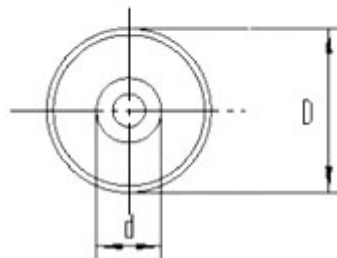
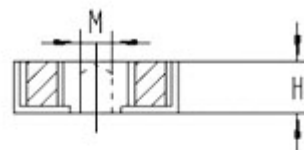
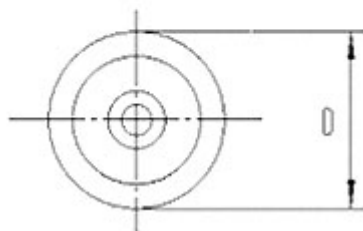
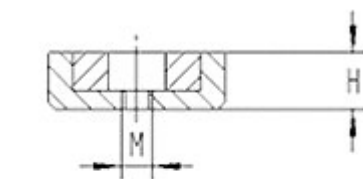
Construction:flat without treaded bush  
Casing:galvanized steel  
Operating temp:max.90°C  
Versions up to 200°C

Part No.	D	H	Weight gram	Attractive force N
YXN 301	6	4.5	1.0	5
YXN 302	8	4.5	1.5	13
YXN 303	10	4.5	2.5	25
YXN 304	13	4.5	4.5	60
YXN 305	16	4.5	6.5	95
YXN 306	20	6.0	15	140
YXN 307	25	7.0	22	200
YXN 308	32	7.0	40	350



### YXN401

Construction:flat without treaded bush  
Casing:galvanized steel  
Operating temp:max.90°C  
Versions up to 200°C



Construction: flat without treaded bush  
 Casing: galvanized  
 Operating temp: max. 80°C

Part No.	D	H	Thread M
YXC 751	85	18	8
YXC 752	85	18	10
YXC 753	105	20	10