

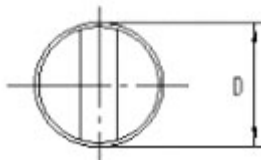
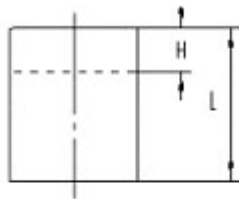
# Magnetic Assemblies >> Pot Magnet

## YXS1311-338 Series

### YXS131-138

Construction:cylindrical  
Casing:brass  
Operating temp:max.90°C  
Versions up to 200°C  
On request

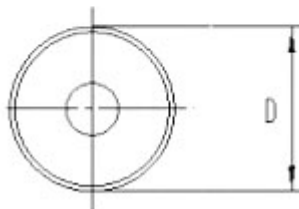
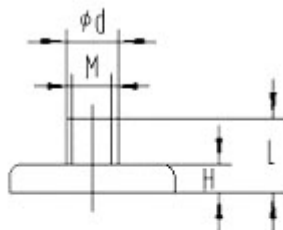
Part No.	D	L	H	Weight gram	Attractive force N
YXS 131	6	20	10	4.5	10
YXS 132	8	20	10	8	25
YXS 133	10	20	8	12.5	45
YXS 134	13	20	8	20	70
YXS 135	16	20	2	32	150
YXS 136	20	25	6	60	280
YXS 137	25	35	7	135	450
YXS 138	32	40	5	250	700



### YXS231-238

Construction:flat without treaded bush  
Casing:galvanized steel  
Operating temp:max.90°C  
Versions up to 200°C  
On request

Part No.	D	H	L	d	M	Weight gram	Attractive force N
YXS 231	6	4.5	11.5	6	3	1.5	5
YXS 232	8	4.5	11.5	6	3	2	13
YXS 233	10	4.5	11.5	6	3	3	25
YXS 234	13	4.5	11.5	6	3	5	60
YXS 235	16	4.5	11.5	8	4	7.5	95
YXS 236	20	6.0	13.0	8	4	16	140
YXS 237	25	7.0	14.0	8	4	25	200
YXS 238	32	7.0	15.5	10	5	48	350



### YXS331-338

Construction:flat without treaded bush  
Casing:galvanized steel  
Operating temp:max.90°C  
Versions up to 200°C  
On request

Part No.	D	H	Weight gram	Attractive force N
YXS 331	6	4.5	1.0	5
YXS 332	8	4.5	1.5	13
YXS 333	10	4.5	2.5	25
YXS 334	13	4.5	4.5	60
YXS 335	16	4.5	6.5	95
YXS 336	20	6.0	15	140
YXS 337	25	7.0	22	200
YXS 338	32	7.0	40	350

