

## Magnetic Assemblies >> Pot Magnet

### YXC151-852 Series

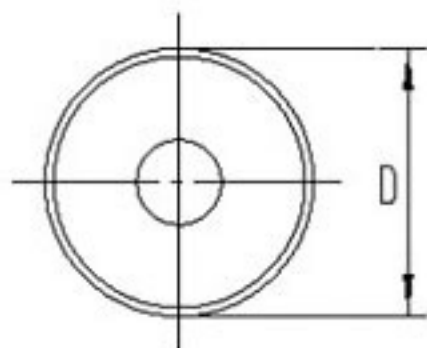
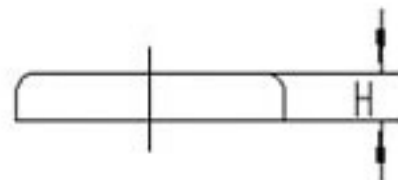
#### YXC151-164

Construction: flat without treaded bush

Casing: galvanized

Operating temp: max. 80°C

Part No.	D	H	Weight gram	Attractive force N
YXC 151	10	4.5	2	4
YXC 152	13	4.5	3	10
YXC 153	16	4.5	4.5	18
YXC 154	20	6.0	10	30
YXC 155	25	7.0	19	40
YXC 156	32	7.0	30	80
YXC 157	36	7.7	40	100
YXC 158	40	8.0	55	125
YXC 159	47	9.0	80	180
YXC 160	50	10.0	100	220
YXC 161	57	10.5	140	280
YXC 162	63	14.0	230	350
YXC 163	80	18.0	485	600
YXC 164	100	22.0	900	900



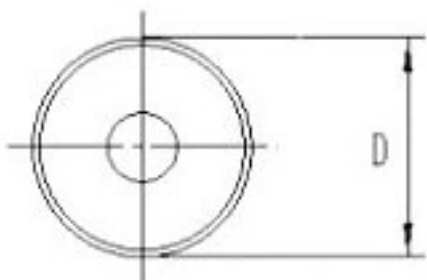
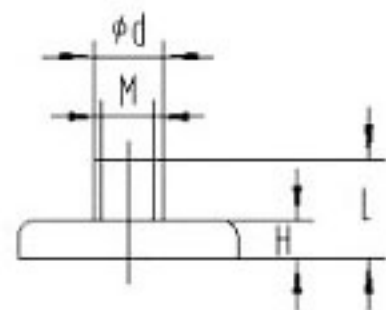
#### YXC251-265

Construction: flat without treaded bush

Casing: galvanized

Operating temp: max. 80°C

Part No.	D	H	L	d	Thread M	Weight gram	Attractive force N
YXC 251	10	4.5	11.0	6	3	3	4
YXC 252	13	4.5	11.5	6	3	5	10
YXC 253	16	4.5	11.5	6	3	6	18
YXC 254	20	6.0	13.0	6	3	11	30
YXC 255	25	7.0	15.5	8	4	22	40
YXC 256	32	7.0	16.0	8	4	32	80



YXC 257	36	7.7	16.0	8	4	45	100
YXC 258	40	8.0	18.0	10	5	60	125
YXC 259	47	9.0	17.5	8	4	90	180
YXC 260	50	10.0	22.0	12	6	110	220
YXC 261	57	10.5	19.0	8	4	145	280
YXC 262	63	14.0	30.0	15	8	240	350
YXC 263	80	18.0	34.0	20	10	520	600
YXC 264	90	13.0			10	570	600
YXC 265	100	22.0	43.0	22	12	940	900

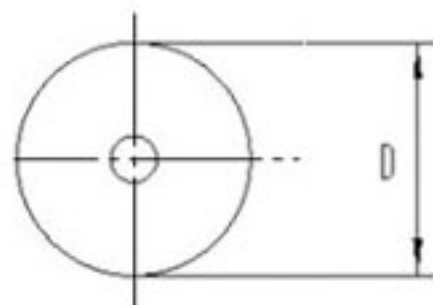
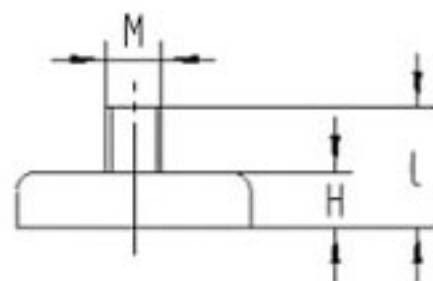
### YXC351-359

Construction: flat without treaded bush

Casing: galvanized

Operating temp: max. 80°C

Part No.	D	H	L	M	Weight gram	Attractive force N
YXC 351	10	4.5	11.5	3	3	4
YXC 352	13	4.5	11.5	3	5	10
YXC 353	16	4.5	11.5	3	6	18
YXC 354	20	6.0	13.0	3	11	30
YXC 355	25	7.0	15.0	4	22	40
YXC 356	32	7.0	15.0	4	32	80
YXC 357	47	9.0	17.0	6	90	180
YXC 358	57	10.5	15.5	6	142	280
YXC 359	63	14.5	29.0	6	335	350



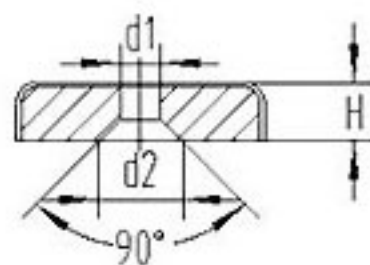
### YXC451-455

Construction: flat without Through hole

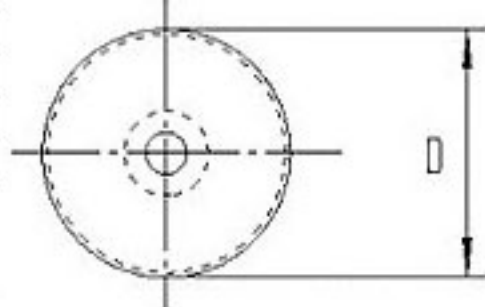
Casing: galvanized

Operating temp: max. 80°C

Part No.	D	H	d1	d2	Weight gram	Attractive force N
YXC 451	16	4.5	3.5	6.5	4	14
YXC 452	20	6.0	4.2	8.6	9	27
YXC 453	25	7.0	5.5	10.4	16	36
YXC 454	32	7.0	5.5	10.4	27	72



YXC 452	20	6.0	4.2	8.6	9	27
YXC 453	25	7.0	5.5	10.4	16	36
YXC 454	32	7.0	5.5	10.4	27	72
YXC 455	40	8.0	5.5	10.4	53	90



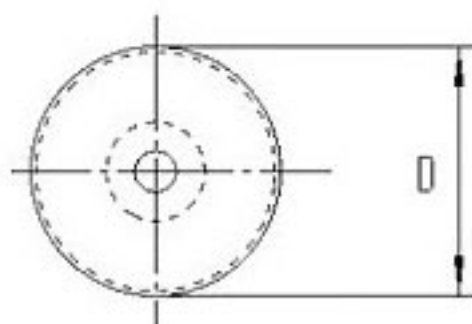
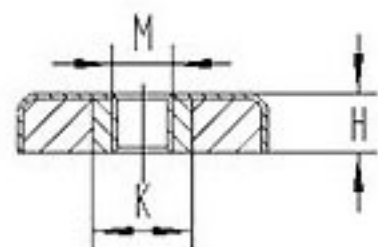
### YXC551-554

Construction: flat without threaded through hole

Casing: galvanized

Operating temp: max. 80°C

Part No.	D	H	M	K	Weight gram	Attractive force N
YXC 551	50	10	6	18	105	170
YXC 552	63	14	8	20	235	350
YXC 553	80	18	8	15	490	550
YXC 554	80	18	10	15	490	550



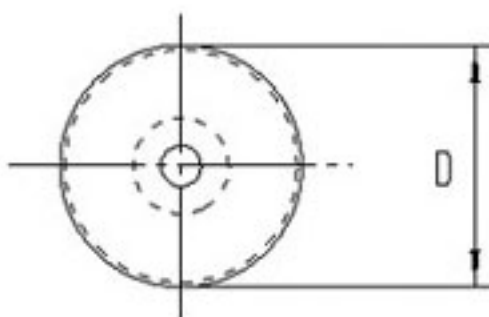
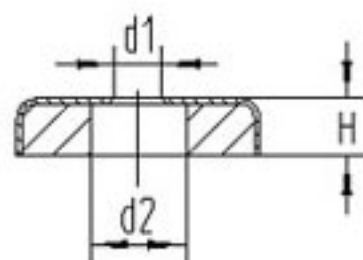
### YXC651-654

Construction: flat without countersunk through hole

Casing: galvanized

Operating temp: max. 80°C

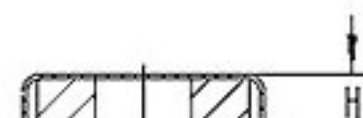
Part No.	D	H	d1	d2	Weight gram	Attractive force N
YXC 651	50	10.5	8.5	22.0	90	180
YXC 652	63	14.0	6.2	24.0	195	290
YXC 653	80	18.0	6.5	11.5	480	540
YXC 654	80	18.0	10.5	32.0	450	600



### YXC851-852

Construction: flat without through hole

Casing: galvanized



## YXC851-852

Construction: flat without through hole

Casing: galvanized

Operating temp: max. 80°C

Part No.	D	H	d1	d2	L	M
YXC 851	86	18	32	72	50	4
YXC 852	105	20	36	90	50	4

