

- ❖ Home
- ❖ **Magnetic Assemblies**
 - Pot Magnet
 - Bar Magnet
 - Square Magnet
 - Horseshoe Magnet
 - Magnetic stand
 - Magnetic Chuck
 - Magnetic Sweepers
 - Pull-and-Push Magnetic Attractor
 - Magnetic door suction
 - Magnetic Separator
 - Lifting Magnets
- ❖ **Specification of Magnets**
- ❖ **Process Pieces**
- ❖ **Other Products**

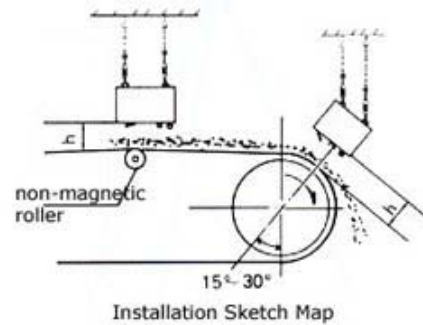
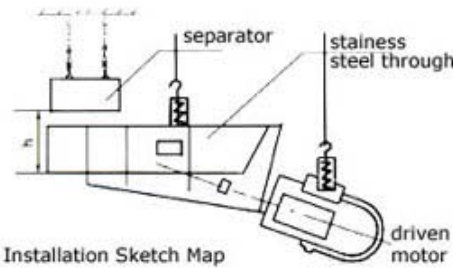
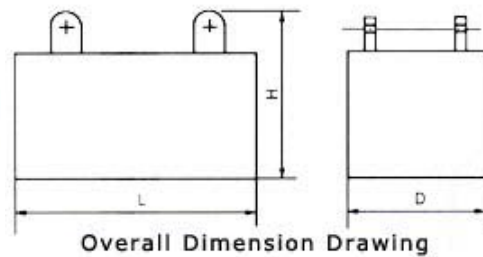
Magnetic Assemblies >> Magnetic Separator

Series PCYB suspension permanent-magnetic separator

Specification Series PCY Permanent-magnetic Tramp Iron Separator

Product Introduction

Inside we adopt the NdFeB featuring with high coercive and remanence to form the complex magnetic system. Featuring with maintenance-exempt, simple mounting convenient use, reliable operation and so on. It is used to eliminate the iron from non-magnetic material from the belt conveyor, vibrating conveyor, and electric magnetic vibrating feeding machine. All of the technical parameters meet JB/T8711-1998 Standard.



Technical Parameters

Type	Belt width adaptive mm	Suspension height h≤mm	Belt speed adaptive ≤m/s	Material thickness ≤mm	Weight Kg	Outline dimension		
						L	D	H
PCYB-4	400	125	4.5	60	115	400	300	230
PCYB-4-1	400	75		30	65	400	250	140
PCYB-5	500	150		90	206	500	350	260
PCYB-5-1	500	100		50	96	500	260	160
PCYB-6	600	175		120	295	600	450	280
PCYB-6-1	600	130		60	158	600	350	180
PCYB-6.5	650	200		150	450	650	600	300
PCYB-8	800	250		200	680	950	950	380
PCYB-8-1	800	200		150	550	800	600	300
PCYB-10	1000	300		250	1180	1100	1000	380
PCYB-12	1200	350		300	1670	1300	1340	420
PCYB-14	1400	400		350	2350	1500	1500	420
PCYB-16	1600	450		400	2850	1750	1750	460

(For Reference Only)

Back to Magnetic Separator List